

CHAMPION BAY
SENIOR HIGH SCHOOL



ENLIGHTEN

Welcome to High School





Your child's exciting educational journey lays ahead as we provide support along the way, in a welcoming atmosphere.





There will be many 'firsts' in a more mature school environment for students in Year 7 including individual timetables, cafeteria, library and a large campus with specialised areas. For those joining us from other high schools up to Year 12, there are many stimulating learning opportunities to enjoy.

So, grab your map and come along for a learning journey like no other.



Teams

Social connections are at the heart of the teenage years. We get that and this is why your child will be part of a team at Champion Bay Senior High School. From the first day, your child is welcomed into a larger group of students, up to five Form classes within the same student team. From Years 7 - 9, this team of students has most of their classes located in certain sections of the campus, but then visits specialist areas for others.

In the senior years (10 to 12), your child continues to be part of the Learning Team. The classes may be located in different parts of the school as your child moves to more specialised areas depending on their learning program.

While we have a *'phones off and away until the end of the day'* policy, your child has the opportunity to socialise within their teams, meeting new friends and reconnecting with friends they have from in the broader community. They celebrate and support one another along the high school journey. It's wonderful to see students work together to pool their reward tickets to enjoy a class or team reward.

Each team is supported by a Team Leader or Year Coordinator and a group of core teachers. These teachers remain connected with you, the parent. When challenges surface, we are all able to get in touch to discuss.

Inclusivity, Acceptance and Opportunity

Within these teams, you will find a culture of inclusivity, acceptance and opportunity as a diverse range of students make up every team. Your child will learn about the school values of 'Respect, Aspire and Resilience' throughout each class as well as through weekly workshops in form class. Students with autism and other needs are supported by targeted intervention, social skill programs and sensory spaces.

Leadership opportunities exist throughout the school with commitments ranging from one term to one year. We regularly send students to leadership workshops and camps to help develop these skills for the future.



Classroom

Our course offering spans from Year 7 through to Year 12. Within our courses, your child will find varying levels of standard curriculum to help each person find success. In our school, your child is on a learning journey, in control of the final destination and guided along the way to help learn new ideas, skills and develop passions which lie within.

Your child's success is supported by teaching, advice and guidance from a team of passionate teachers and education support staff. Our teachers work collaboratively to extend and work to develop the interests of your child. They are approachable, adaptable and passionate about the subjects they teach.

Your child will be provided with an ICT device while at school which is used for school work in the classrooms throughout the day. These devices are kept securely at school overnight, charging and ready for a new day.

As your child progresses through to the senior Years 11 and 12, we offer a comprehensive range of Certificate, ATAR, General and Foundation options to help achieve the Western Australian Certificate of Education. Some of the courses we may offer include:

- Applied Information Technology
- Biology
- Career and Enterprise
- Chemistry
- Children, Family and the Community
- Economics
- English
- Food Science and Technology
- Health Studies
- Health, Physical and Outdoor Education
- Human Biology
- Integrated Science
- Indonesian: Second Language
- Materials Design and Technology – Metal or Wood
- Mathematics: Applications, Essential, Foundation, Methods and Specialist
- Media Productions and Analysis
- Modern History
- Physical Education Studies
- Physics
- Visual Arts

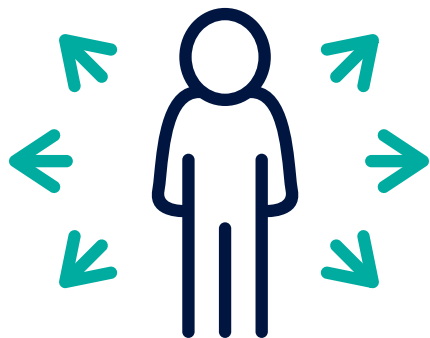
We also work with the School of Isolated and Distance Education to provide additional ATAR courses. Indonesian is an example here.

We offer certificate study, TAFE Link courses, Pre-Apprenticeship in Schools and School-based Traineeship Programs. Study areas may include:

- Animal Studies
- Automotive
- Building and Construction
- Business
- Conservation and Land Management
- Computer Reassembly and Repair
- Early Childhood Education
- Engineering
- Hospitality and Tourism
- Information, Digital Media and Technology
- Preparation for Health and Nursing Studies
- Salon Assistant
- Sport and Recreation
- Visual Arts

We are a flexible school and committed to helping your child study in an area of personal interest. The list above is not exhaustive, please get in contact to discuss your child's individual circumstance and interest.





Specialist Programs

It's important to note that every child is an individual and your child may benefit from a host of programs that we have available. We are accepting of all types of students and so is our school community. Each child benefits from the support of their peers, the foundation of our school.

Champions Innovation Academy

This Approved Specialist Program is a differentiated learning program in STEM to help your child achieve their potential in Mathematics and Science and extend their understandings in English and Humanities and Social Sciences. They learn the basics of robotics and coding, and skills for the future, such as cooperation and teamwork. The selection process is advertised to all primary schools in the region and selected students are invited to sit the entry testing.

Literacy Program

We have a dedicated literacy enrichment program which helps students get support in reading and writing. There are many special wins when students achieve their goals.

Girls in Engineering, Maths and Science (GEMS)

This STEM program is open to female students in Years 5 and 6 in Geraldton primary schools. It runs twice weekly after school at Champion Bay Senior High School.

Clontarf Foundation

Part of the Clontarf Foundation, the Champion Bay Academy helps improve the education, employment prospects, life skills, discipline and self-esteem of young Aboriginal and Torres Strait Islander men. By doing so, equips them to participate more meaningfully in society.

SHINE

A long-standing program at Champion Bay Senior High School, SHINE supports, educates and empowers young women in Years 9 and 10. They gain life skills and emotional tools to ensure the future is in their hands.

Deadly Sista Girlz

This program aims to build confidence, pride and self-esteem in young Aboriginal and Torres Strait Islander girls. Students can participate from Years 7 through to 12. The Deadly Sista Girlz contribute to the cultural community, have positive social interactions, build relationships and learn about health issues.

Indonesian

Our school has continued its role as the Indonesian Hub School. We provide an ATAR pathway in Indonesian for students who have studied the language from Year 7.

Performance Arts

Your child can take advantage of a range of opportunities to study Music including Junior and Senior Performance ensembles, Instrumental Music School Services (IMSS) and after school Dance classes.

Career Central @ Champion

It's a busy hub over at Career Central. This team helps your child find a first job or an apprenticeship. Moreover, they help expose your child to the work options out there and help navigate their options and preferences.

Champions @ Work

This program in Years 10 to 12, is a hands-on program where the group of students takes on and completes community projects that are adapted and matched with student ability and interests.

Of course, there is more... daily breakfast club, ASDAN, weekly homework club, ATAR study classes and even visiting Allied Health professionals who provide therapy sessions for specific diagnosed needs. Your child has the opportunity to grow beyond standard academics at Champion Bay Senior High School.



You're not alone

There is a real sense of community at Champion Bay Senior High School. This is supported by a very active Student Services team who goes above and beyond to help your child and the school community feel positive. The team is also there to give your child a hand when things aren't going so well.

This team consists of a Manager, a Community Health Nurse, Chaplain and a School Psychologist. Extending beyond, external agencies visit weekly to conduct workshops with identified students.

The Student Services team works behind the scenes and are part of initiatives such as our Transition program. During these three consecutive days, your child is immersed in what life is like at Champion Bay Senior High School. Tours, classroom activities and team building fun makes for an enjoyable time – one that is remembered on the first day of school in the following year.

There aren't any tears, just laughter and fun as your child reconnects with friends.

What are you waiting for?

Fill out the enrolment form and experience the difference at Champion Bay Senior High School where your child will be empowered to become an independent learner, critical thinker and problem solver.



CHAMPION BAY
SENIOR HIGH SCHOOL



ENLIGHTEN

championbayshs.wa.edu.au

To book a tour or for more information
about our school, please phone 08 9965 8300.